

MAP OF THE  
 Cal Mutual Benefit Colony of Chicago's

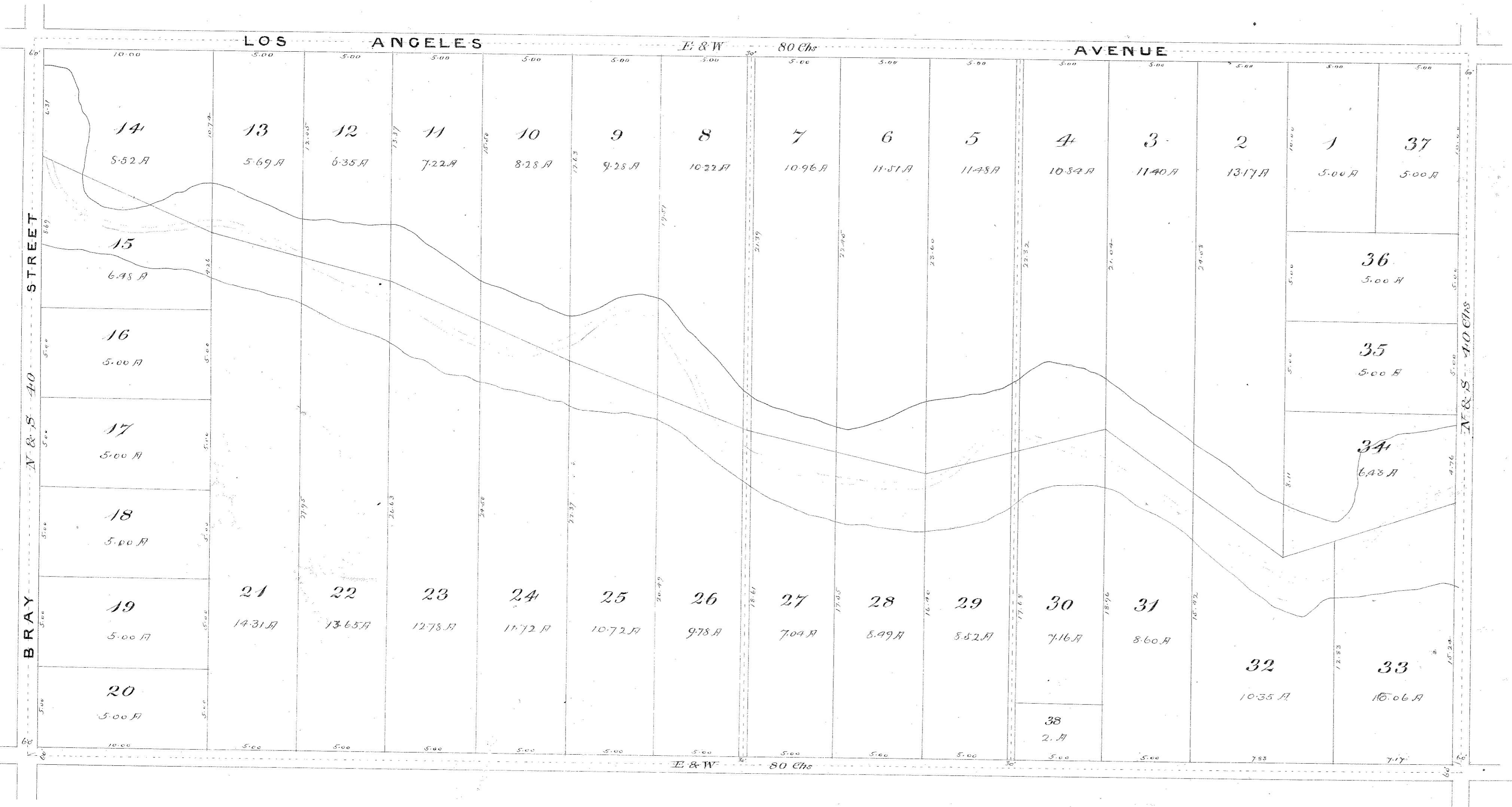
SUBDIVISION OF THE S 1/2 OF LOT 9 T2NR18W

of the **RANCHO SIMI**

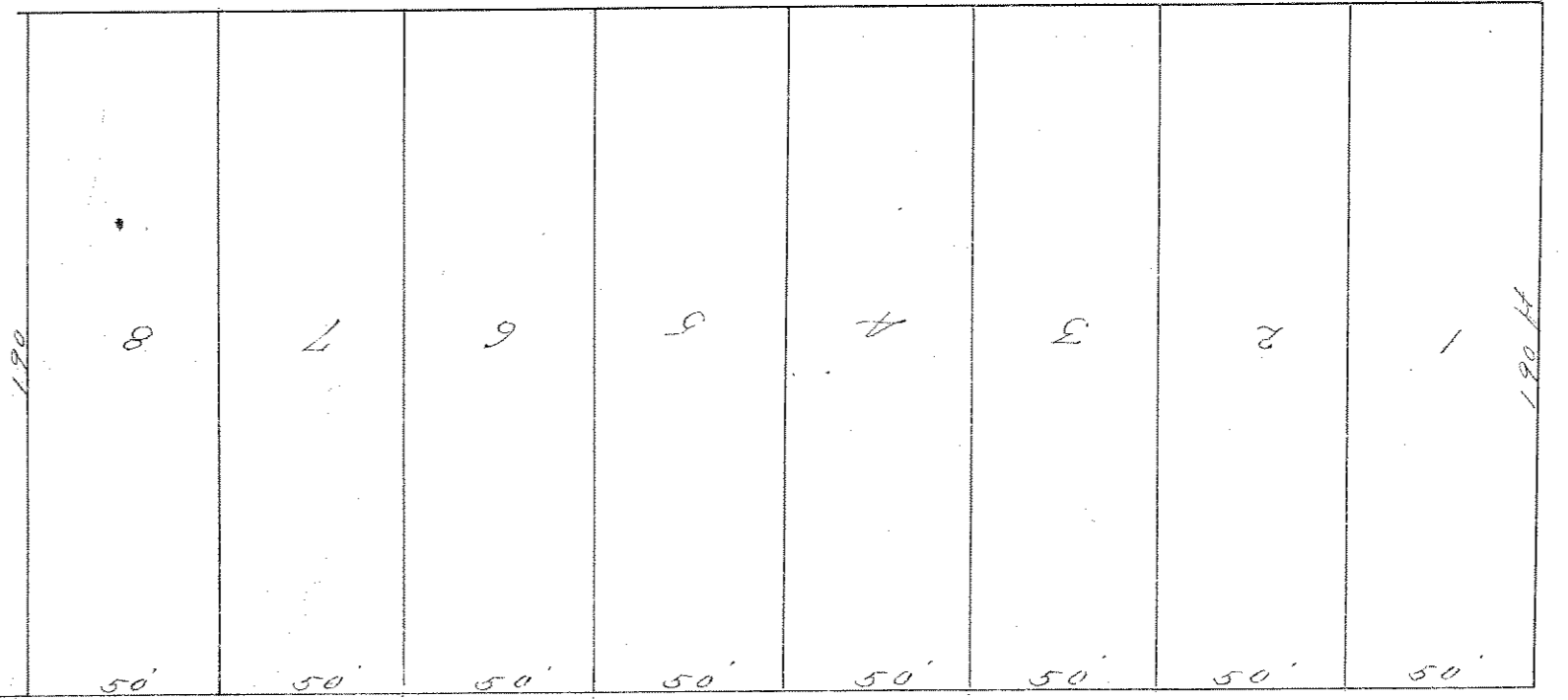
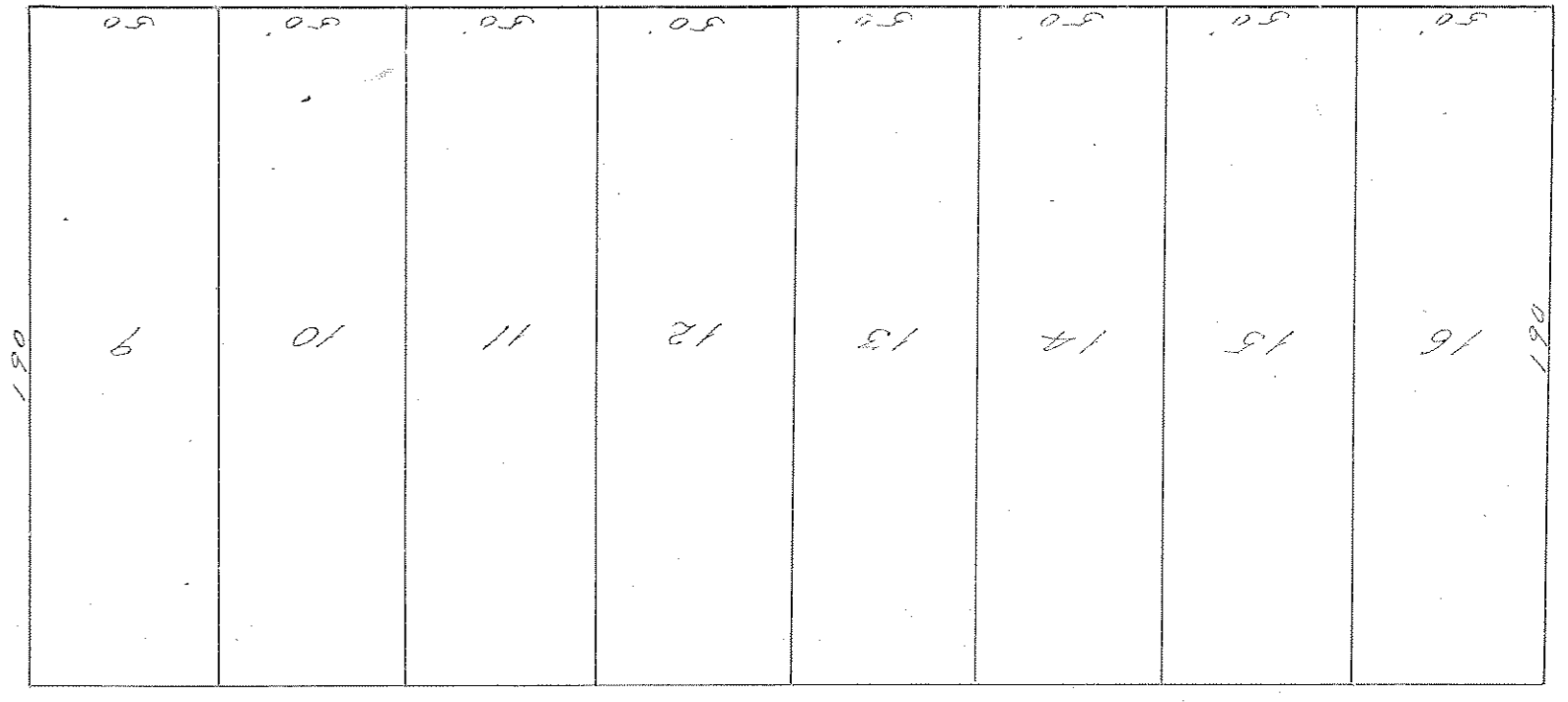
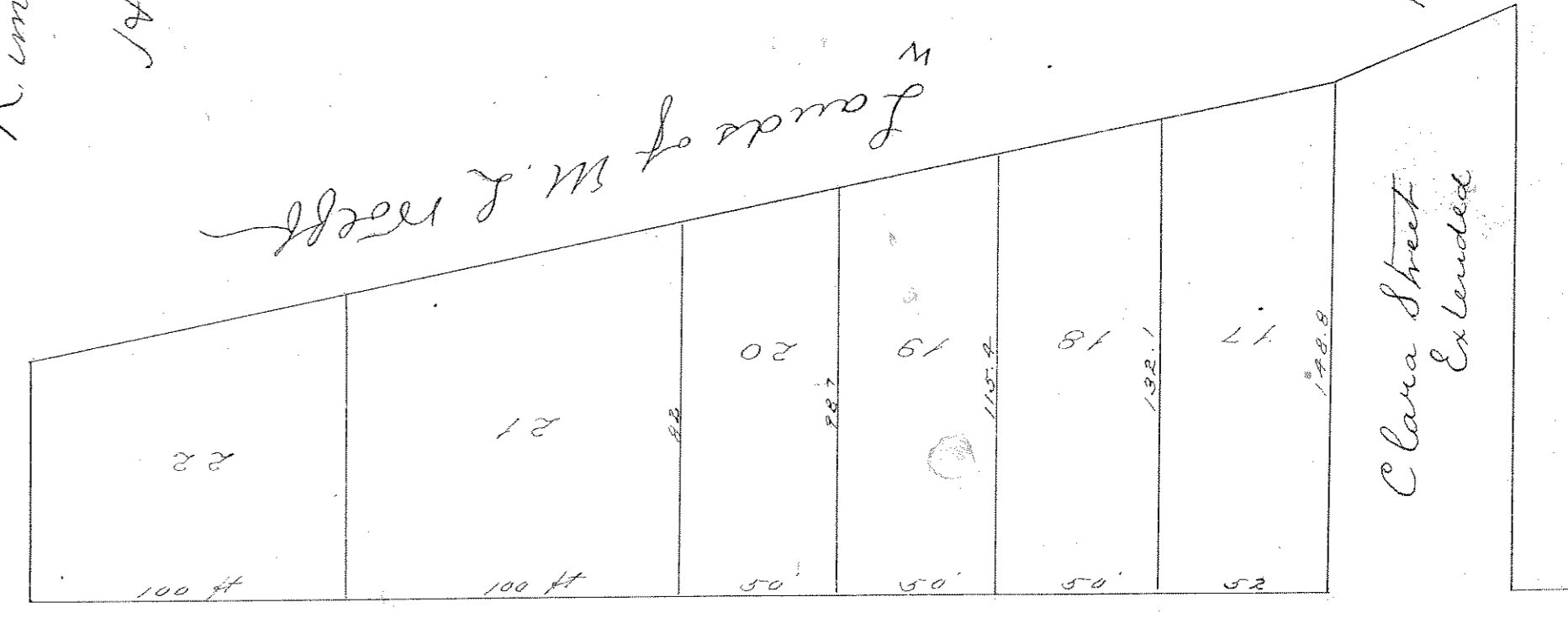
As shown by Map of Rancho Simi, Recorded in Book 3 Page 7 Miscellaneous Records, Ventura Co, Cal.

SURVEYED, JAN 1889 BY FW. SKINNER, & Co.

Scale 4 Chains to One Inch



Map of  
 Kimball's Addition  
 to  
 Hueneville, Cal.  
 Surveyed by  
 John Barry  
 1898



Land of J. H. Merry

Land of J. H. Merry

RECORDED AT THE REQUEST OF  
 J. H. Merry  
 1 inch to left. By J. B. A. D. 1899  
 at  
 at black 21

Records of Ventura Co Cal.  
 W. H. Jewett  
 COUNTY RECORDER

Recorded at the request of G. A. Culler,  
 Feb. 19<sup>th</sup> 1889, at 40 min past 9 AM,  
 W. H. Jewett, Recorder.

Clara Street

Clara Street

5<sup>th</sup> Street

4<sup>th</sup> Street

Block "W"  
 Hueneville

Block "V"  
 Hueneville