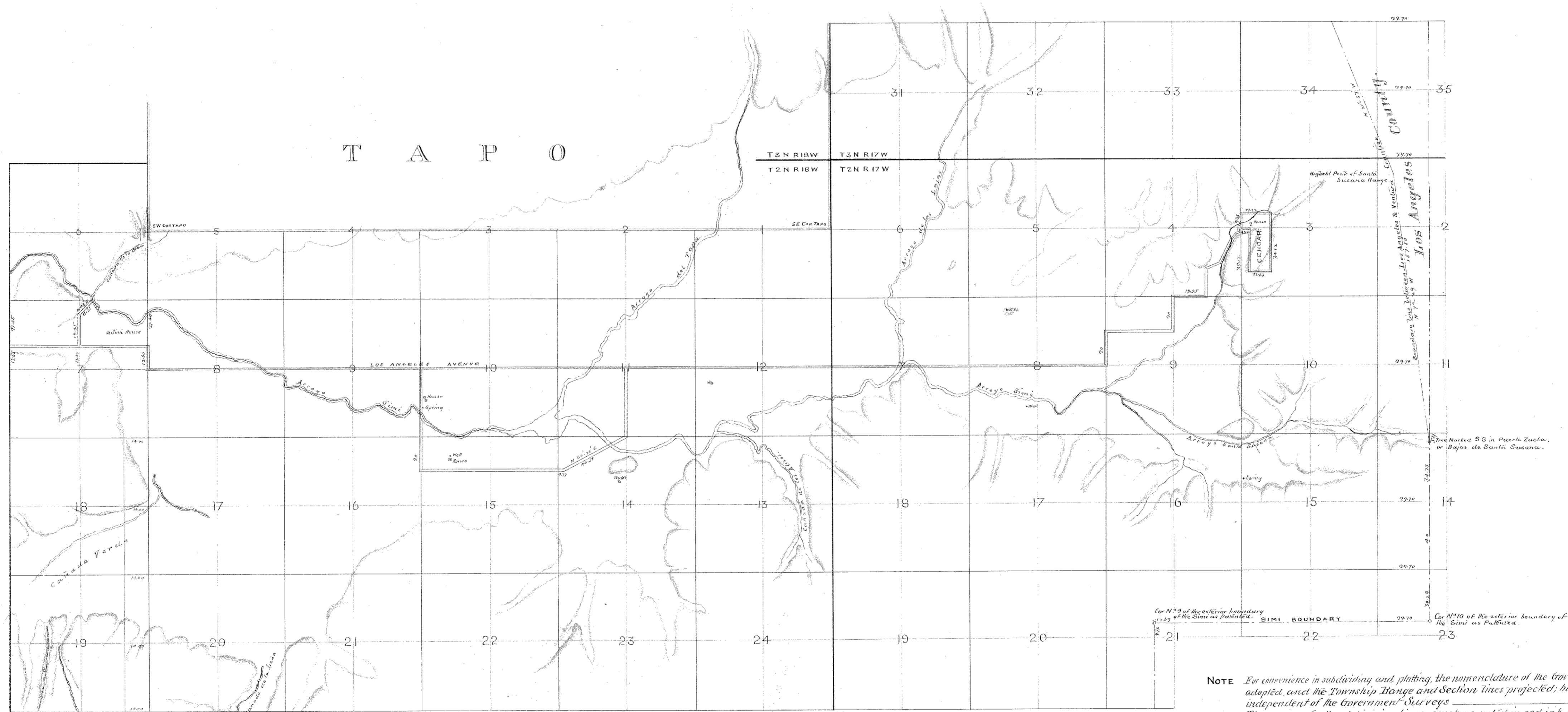


PLAT OF THE
VALLEY OF THE SIMI

Being Subdivision Map N^o 1
 OF THE LANDS OF
 The Simi Land & Water Co
 Counties of Ventura & Los Angeles, Cal.

SCALE 20 CHAINS TO ONE INCH



NOTE For convenience in subdividing and plating the nomenclature of the Government Surveys has been adopted, and the Township Range and Section lines projected; but this survey is altogether independent of the Government Surveys. The courses of all subdivision lines except as noted in red ink are North and South or East and West, the Magnetic Variation being 14° 25' East. Except as designated in red ink all subdivisions of Sections are 40 chains square and contain 160 Acres. Corners of Sections are marked on the ground by 4.25" red wood posts. Quarter Section Corners are marked by 2.5" 3/4" red wood posts. All roads and Avenues on this map are 60 feet wide.

This Map adopted by Resolution of the Board of Directors of THE SIMI LAND & WATER CO passed November 16th 1887

Surveyed & Mapped by
 Stow and Power.
 OCT 1887 SAN BUENAVENTURA, CALA.

Recorded at the request of Thomas R. Bard,
 January 3rd 1888 at 4 P.M.
 L. F. Eastin, Recorder.

R. W. Brindley, Secretary
 Thomas R. Bard, President

