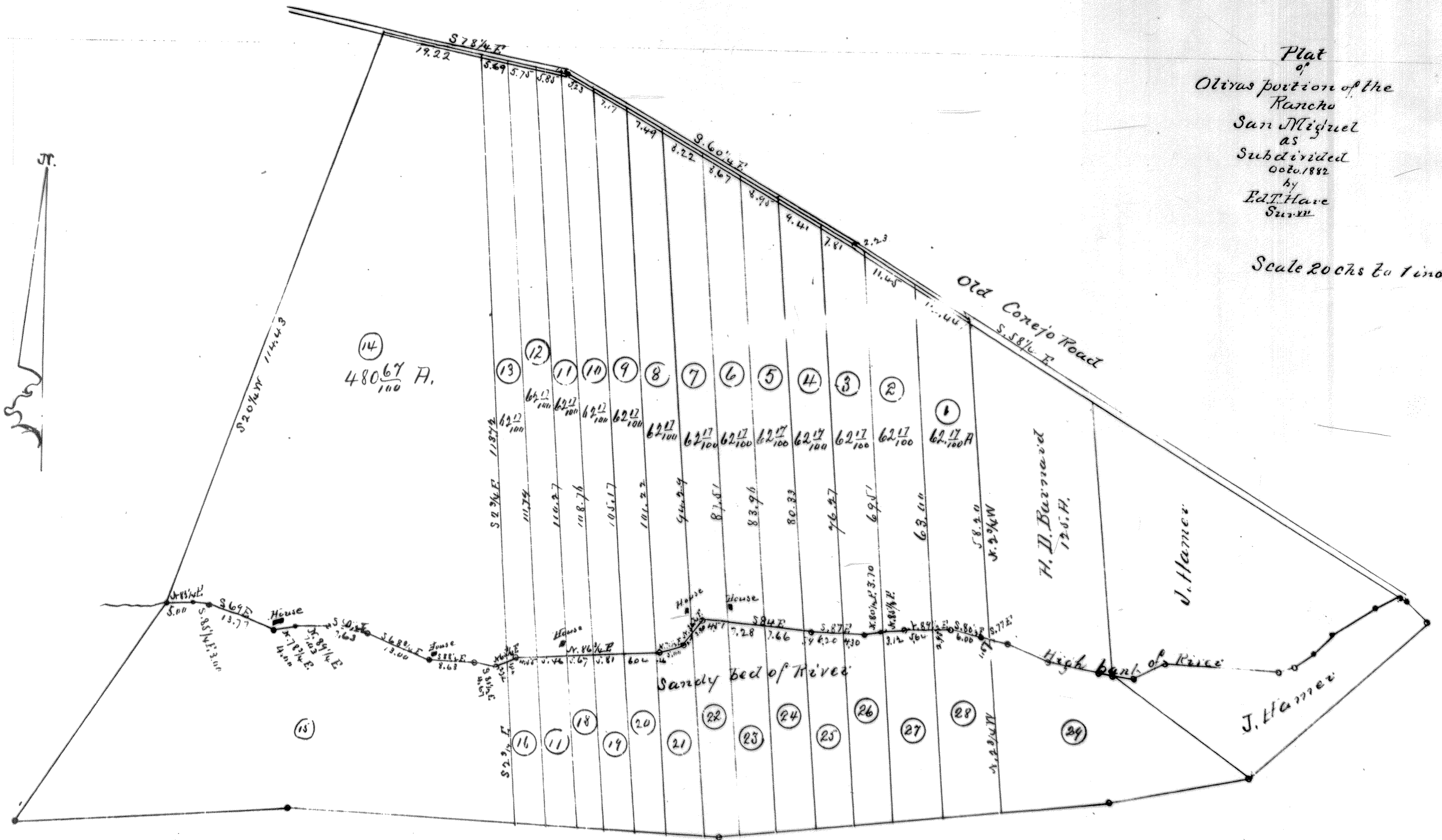


Plat
of
Olivas portion of the
Rancho
San Miguel
as
Subdivided
Octo. 1882
by
Ed. T. Hare
Surv.

Scale 20 chs to 1 inch



Recorded at the request of
Raymundo Olivas Oct. 19 1882
at 3 P.M.
L. T. Eastin Recorder

2-MISC-1