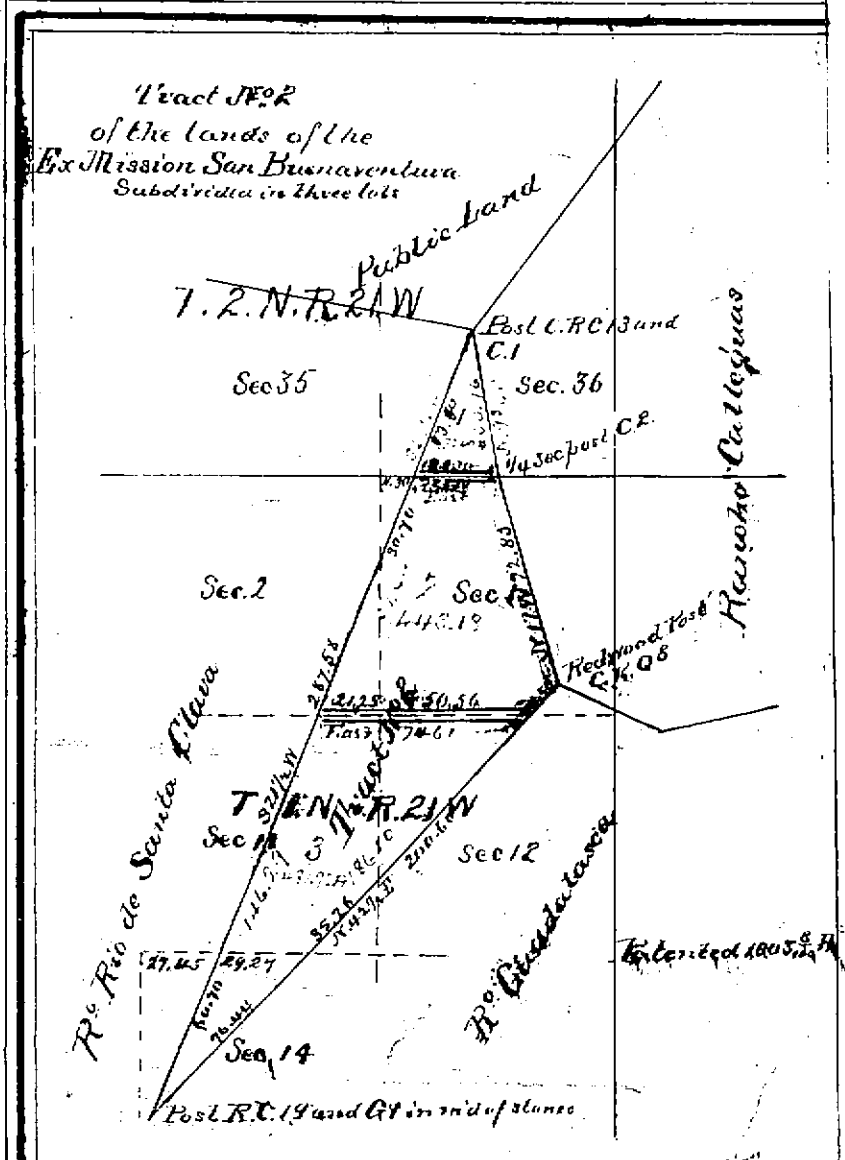


Recorded at the request of
 Frederick Steinkach September 7th 1892
 at 3:45 P.M.
 S. J. Eastin Recorder
 by Ed. J. New Deputy

Map of the Rancho
 Ex Mission San Buenaventura
 Tract 1891
 Subdivided after the Survey made
 by Ed. J. New County Surveyor Ventura Co
 Cal.
 September 1892

Course and distance in feet are given in the Patent
 Black. after Ed. J. New's Survey
 Boundaries of subdivisions are colored Yellow
 Lots in subdivisions are colored Red
 Courses and distances of lots in subdivisions are in Blue



2 MR

103