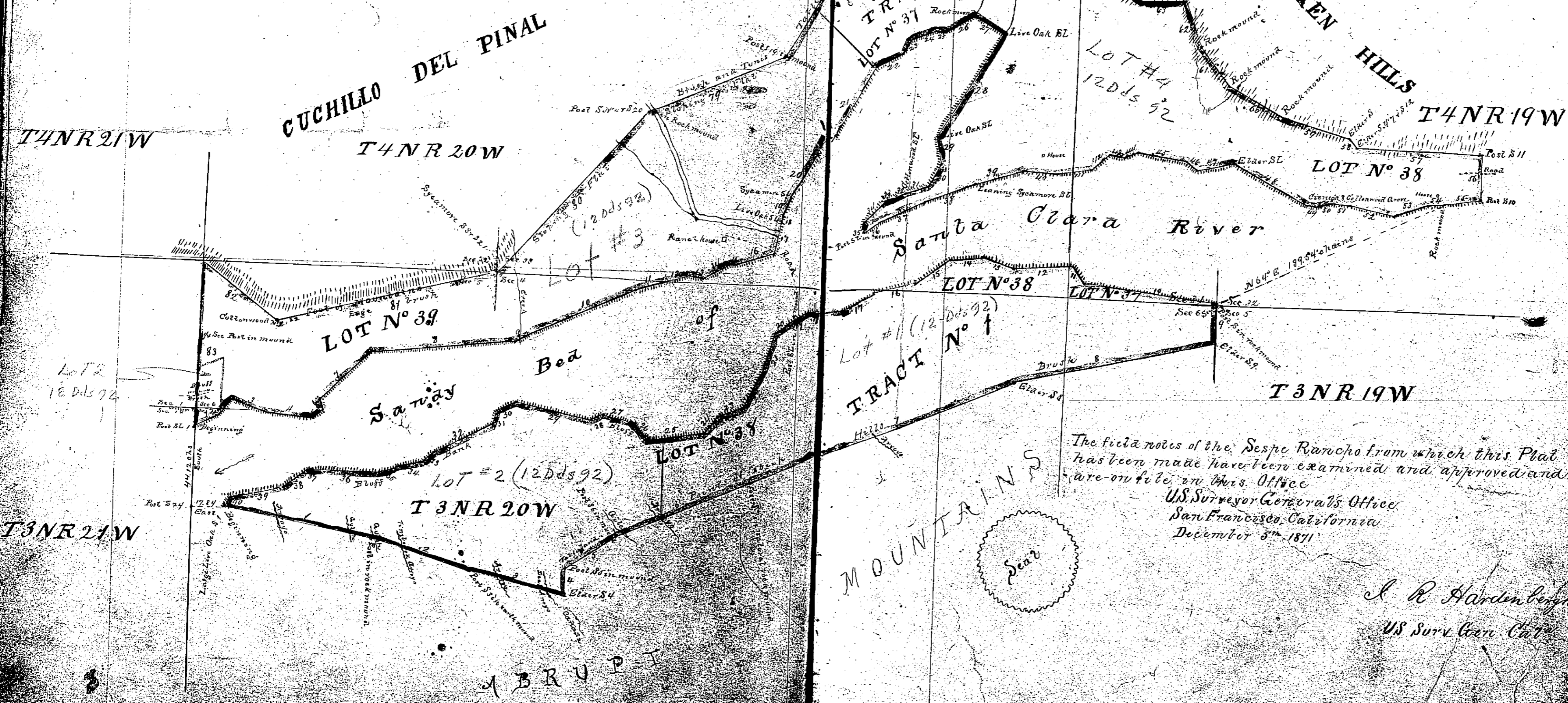


Boundaries of TRACT N° 1			Boundaries of TRACT N° 2		
N°	Course	Distance	N°	Course	Distance
1	S 80° E	82.00	1	N 76 1/2° E	16.00
2	77°	54.39	2	57 1/2°	10.00
3	N 73° W	15.00	3	86°	24.70
4	S 85° E	33.00	4	N 43 1/2° W	7.00
5	65°	30.00	5	N 43 1/2° W	7.00
6	66 1/2°	153.18	6	N 43 1/2° W	7.00
7	76°	119.19	7	N 43 1/2° W	7.00
8	N 67 1/2° W	72.00	8	76 1/2°	7.00
9	N 84 1/2° W	74.00	9	62 1/2°	5.00
10	85 1/2°	15.00	10	77 1/2°	11.00
11	85 1/2°	32.00	11	77 1/2°	11.00
12	N 75 1/2°	19.00	12	77 1/2°	11.00
13	N 81 1/2°	16.00	13	77 1/2°	11.00
14	81 1/2°	25.00	14	77 1/2°	11.00
15	76°	25.00	15	77 1/2°	11.00
16	87°	16.44	16	77 1/2°	11.00
17	63°	15.81	17	77 1/2°	11.00
18	46 1/2°	8.18	18	77 1/2°	11.00
19	13°	24.35	19	77 1/2°	11.00
20	69°	20.00	20	77 1/2°	11.00
21	59°	12.00	21	77 1/2°	11.00
22	53°	12.00	22	77 1/2°	11.00
23	79°	12.77	23	77 1/2°	11.00
24	N 80 1/2°	5.00	24	77 1/2°	11.00
25	N 80 1/2°	45.12	25	77 1/2°	11.00
26	114°	8.00	26	77 1/2°	11.00
27	62 1/2°	35.00	27	77 1/2°	11.00
28	50 1/2°	9.10	28	77 1/2°	11.00
29	79 1/2°	17.00	29	77 1/2°	11.00
30	82 1/2°	5.00	30	77 1/2°	11.00
31	87 1/2°	16.00	31	77 1/2°	11.00
32	76 1/2°	30.67	32	77 1/2°	11.00
33	17 1/2°	5.17	33	77 1/2°	11.00

Approved March 14 1872
 Wills Drummond
 Commissioner of the General Land Office

PLAT
 of the
SESPE RANCHO
 finally confirmed to
THOMAS W. MORE et al
 surveyed under instructions from the
U.S. SURVEYOR GENERAL
 by
 Charles F. Hoffman Dep Sur
 January 1868
 Containing: Tract N° 1, 3086 1/2 Acres
 Tract N° 2, 5793 1/2 " "
 Aggregate 8880 " "
 Scale 40 Chs to 1 inch
 Var. 14° 15' E



The field notes of the Sespe Rancho from which this Plat has been made have been examined and approved and are on file in this Office
 U.S. Surveyor General's Office
 San Francisco, California
 December 5th 1871

A. R. Hardenbergh
 U.S. Survey Gen. Cal.

95/10