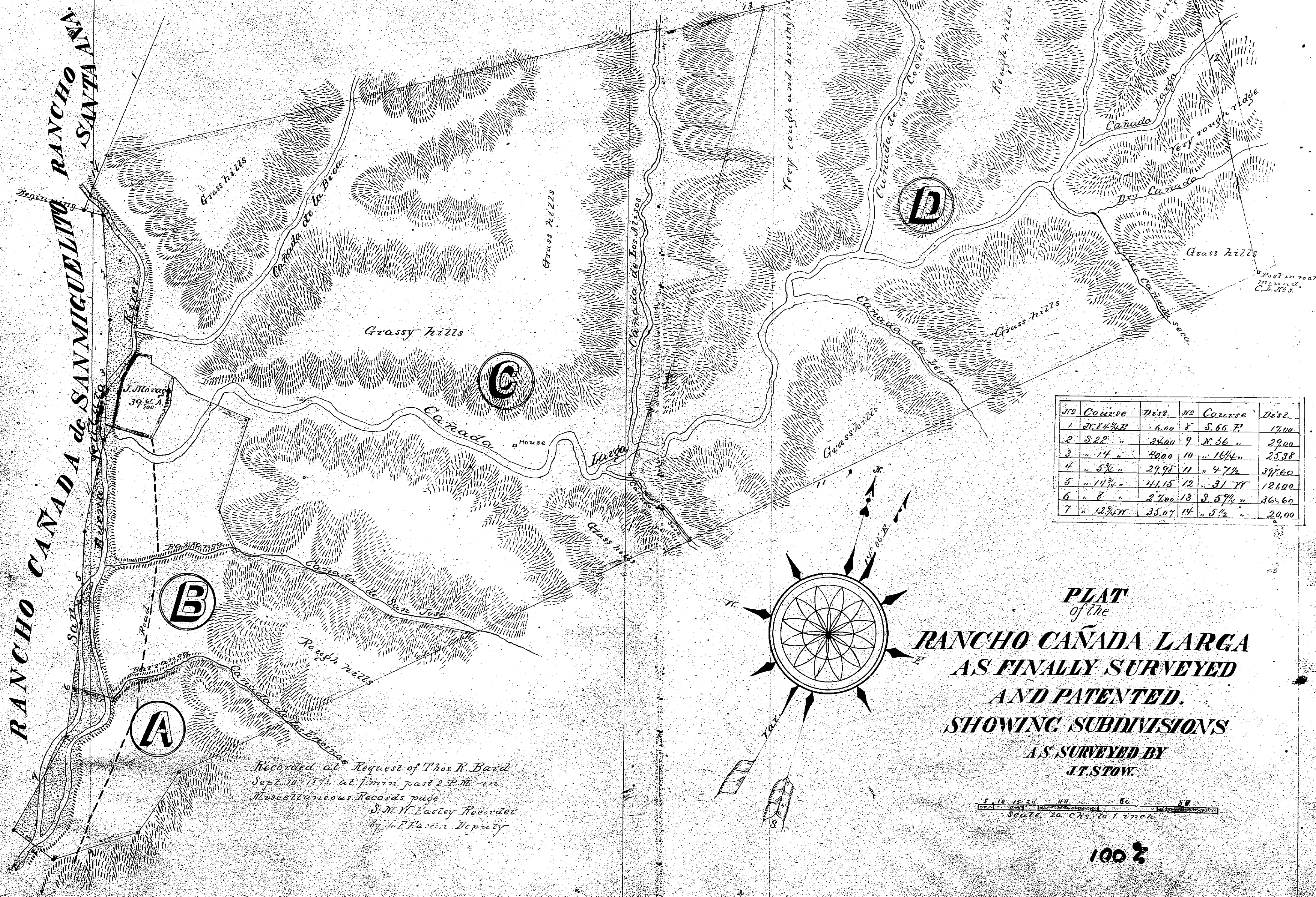


Approved August 11, 1873
 Thomas P. Bard }
 W. S. Chaffee } Referees

RANCHO CAÑADA de SANMIGUELITO
 RANCHO SANTA ANA



No	Course	Dist.	No	Course	Dist.
1	S. 84 3/4 W	6.00	8	S. 66 E	17.00
2	S. 22 "	34.00	9	N. 56 "	29.00
3	" 14 "	40.00	10	" 16 1/4 "	25.38
4	" 5 1/4 "	29.95	11	" 4 7/8 "	39.60
5	" 14 3/4 "	41.15	12	" 31 7/8 "	121.00
6	" 8 "	27.00	13	S. 5 1/4 "	36.60
7	" 12 3/4 W	35.07	14	" 5 1/2 "	20.00

Recorded at Request of Thos. P. Bard
 Sept. 10, 1873. at 7 min past 2 P.M. in
 Miscellaneous Records page
 S. M. W. Eastley Recorder
 G. J. Eastley Deputy

Scale 20 Chs to 1 inch

100%

BK 1 - MR