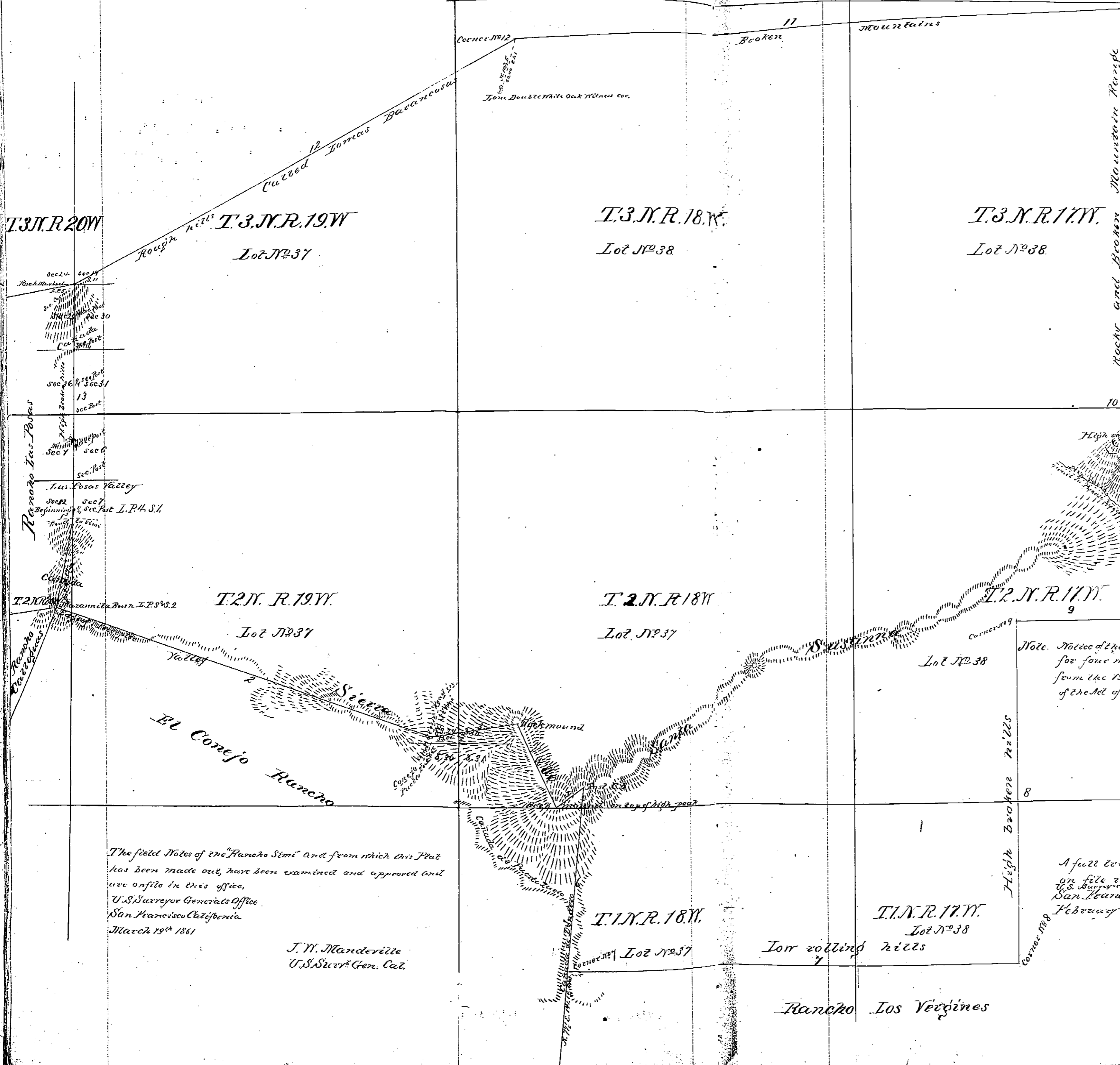


San Francisco Rancho

Book 1 - Patents



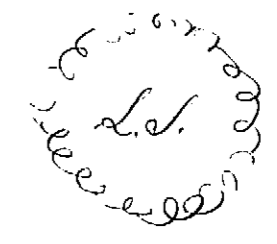
PLAT
of the
RANCHO SIMI
finaly confirmed to
JOSE DE LA GUERRAY NORIEGA
Surveyed under instructions from
U. S. SURVEYOR GENERAL
By
J. B. Terrell Dep. Surr.
January 1861
Containing 113,009¹/₂ Acres.
Scale 80 chs to 1 inch
Tiltation 1536 East.

Boundaries.

| No. | Course | Dist. |
|-----------|---------------|-----------------------------------|
| 1 | S. 13° W. | 122.10 |
| 2 | S. 77° E. | 503.02 |
| 3 | N. 33° E. | 109.10 |
| 4 | S. 23° E. | 112.65 |
| 5 | N. 55° E. | 42.80 |
| 6 | S. 7° W. | 223.84 |
| 7 | East | 554.95 |
| 8 | North | 420.00 |
| 9 | East | 140.00 |
| 10 | North | 737.10 |
| 11 | S. 87° 21' W. | 740.00 |
| 12 | S. 63° W. | 631.00 |
| 13 | South | 276.95 |
| Signature | | 4664.23 = 3/4 mile. 54 ch. 23 2/3 |

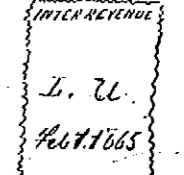
Note. Notice of the approval of this plat and its extension in Office for four miles subject to inspection has been published from the 19th September 1860 to 29th January 1861 in pursuance of an act of Congress of June 14th 1860

L. Upson
U.S. Surv. Genl. Cal.



A full true and correct copy of the original Plat on file in this office U.S. Surveyor General's Office San Francisco California February 1st 1865.

L. Upson
U.S. Surv. Genl. Cal.



The field Notes of the "Rancho Simi" and from which this Plat has been made out, have been examined and approved and are on file in this office.
U.S. Surveyor General's Office
San Francisco California
March 19th 1861

J. W. Manderille
U.S. Surv. Gen. Cal.

Rancho Los Virgenes