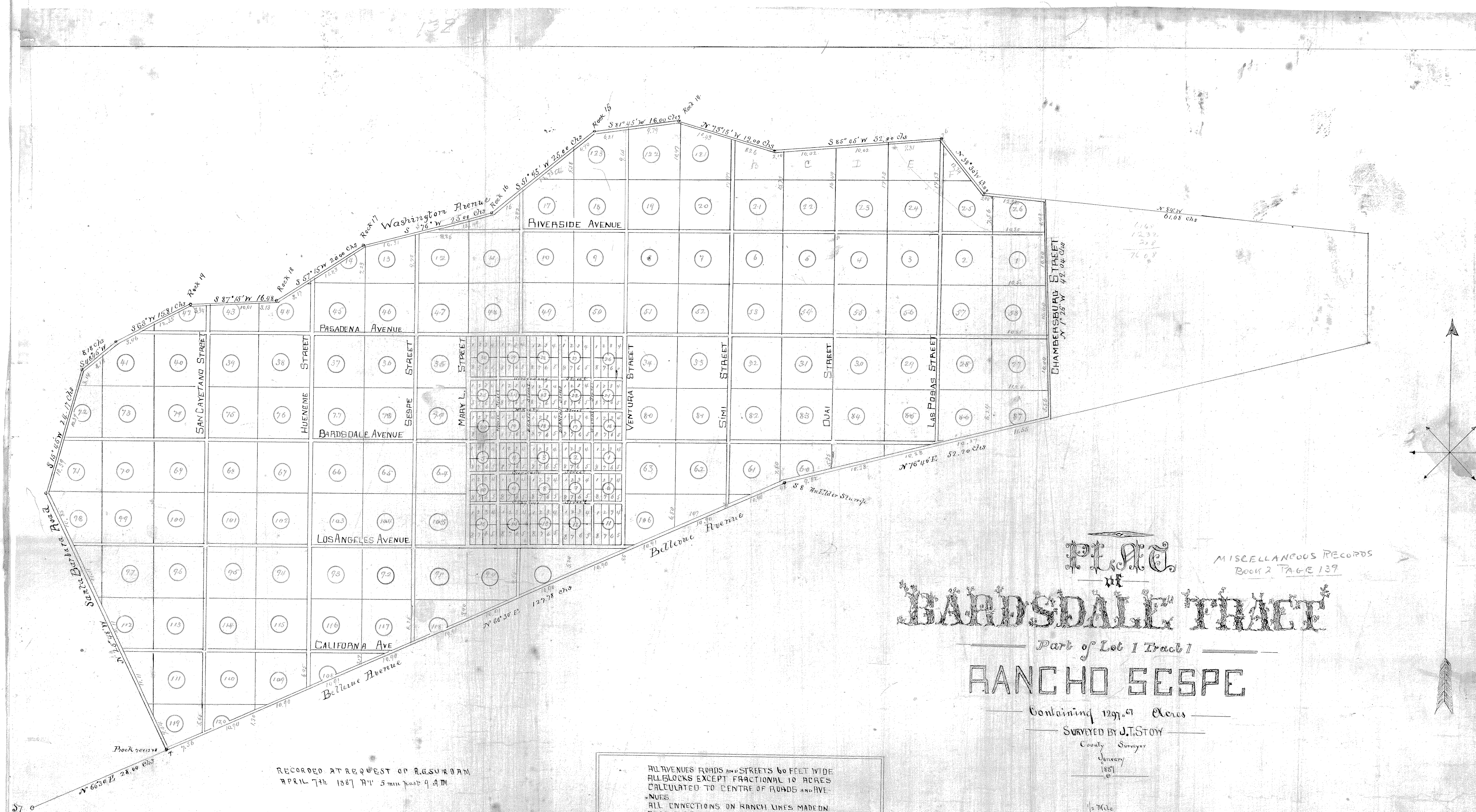


SEE ALSO BR 28 DEED PAGE 21
FOR RECORD OF THIS



RECORDED AT REQUEST OF R.G. SUDAM
APRIL 7th 1887 AM 5 min past 9 AM

L. A. Eastin
RECORDER

ALL AVENUES ROADS AND STREETS 60 FEET WIDE
 ALL BLOCKS EXCEPT FRACTIONAL 10 ACRES
 CALCULATED TO CENTRE OF ROADS AND AVENUES
 ALL CONNECTIONS ON RANCH LINES MADE ON
 ROAD CENTRES

PLAT
 OF
BARDSDALE TRACT

Part of Lot 1 Tract 1

RANCHO SESPE

Containing 129.67 Acres

SURVEYED BY J.T. STONY

County Surveyor
January
1887

1/2 Mile

Scale 10 Chains to Inch

MISCELLANEOUS RECORDS
BOOK 2 PAGE 139